

**TREPPENHAUS D  
 WOHNUNGSTYP 29**

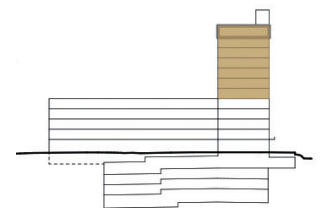
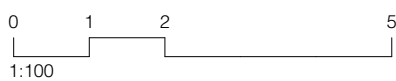
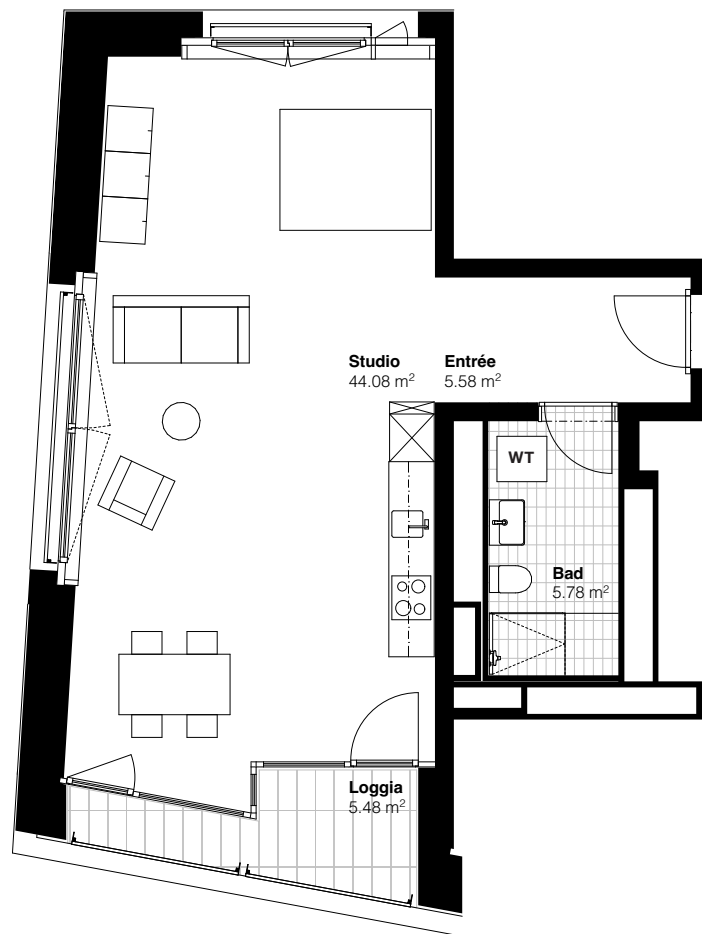
Eisenbahnweg 2c  
 4058 Basel

**STUDIO  
 5.-11. OBERGESCHOSS**

Wohnfläche 55.44 m<sup>2</sup>  
 Loggia 5.48 m<sup>2</sup>

**WOHNUNGSNUMMER/  
 BRUTTOMIETZINS (Inkl. NK)**

05.D.3	CHF	1'490.00
06.D.3	CHF	1'530.00
07.D.3	CHF	1'620.00
08.D.3	CHF	1'690.00
09.D.3	CHF	1'760.00
10.D.3	CHF	1'850.00
11.D.3	CHF	2'000.00



**Haus D**

