

**TREPPENHAUS D
WOHNUNGSTYP 25**

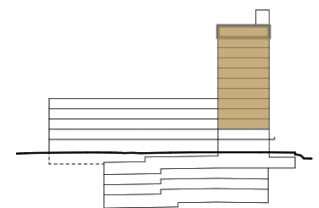
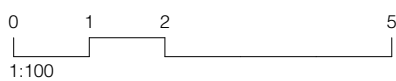
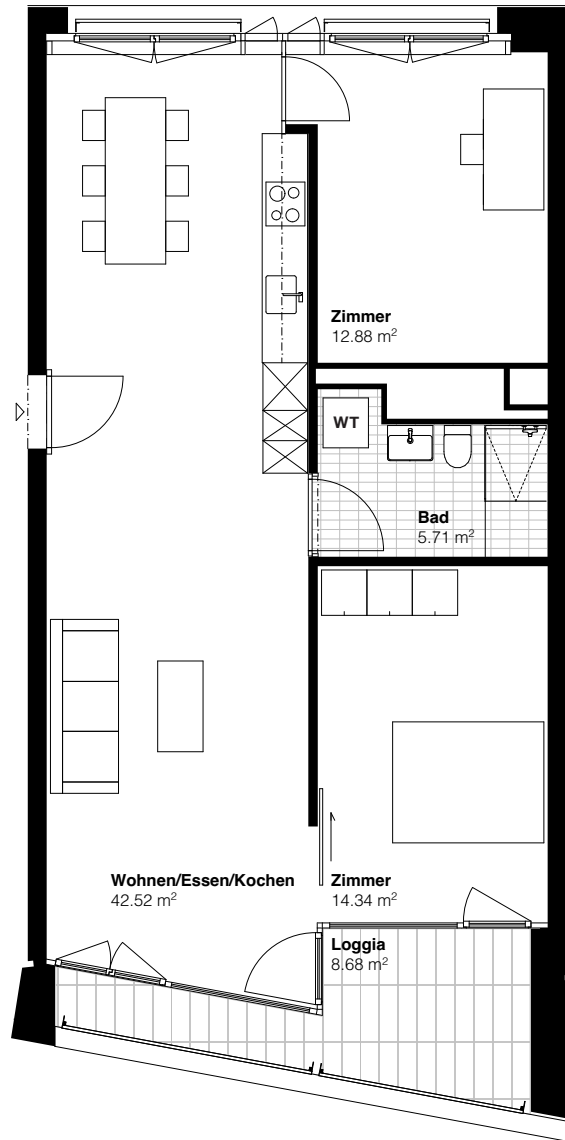
Eisenbahnweg 2c
4058 Basel

**3½-ZIMMER
2.-11. OBERGESCHOSS**

Wohnfläche 75.45 m²
Loggia 8.68 m²

**WOHNUNGSNUMMER/
BRUTTOMIETZINS (Inkl. NK)**

02.D.1	CHF	1'510.00
03.D.1	CHF	1'550.00
04.D.1	CHF	1'590.00
05.D.1	CHF	1'680.00
06.D.1	CHF	1'720.00
07.D.1	CHF	1'810.00
08.D.1	CHF	1'880.00
09.D.1	CHF	1'950.00
10.D.1	CHF	2'040.00
11.D.1	CHF	2'190.00



Haus D

