

**TREPPENHAUS C
WOHNUNGSTYP 24**

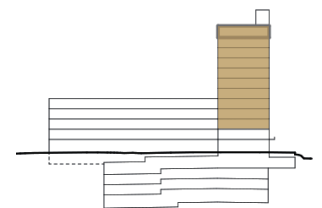
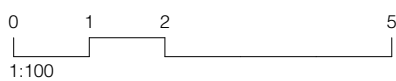
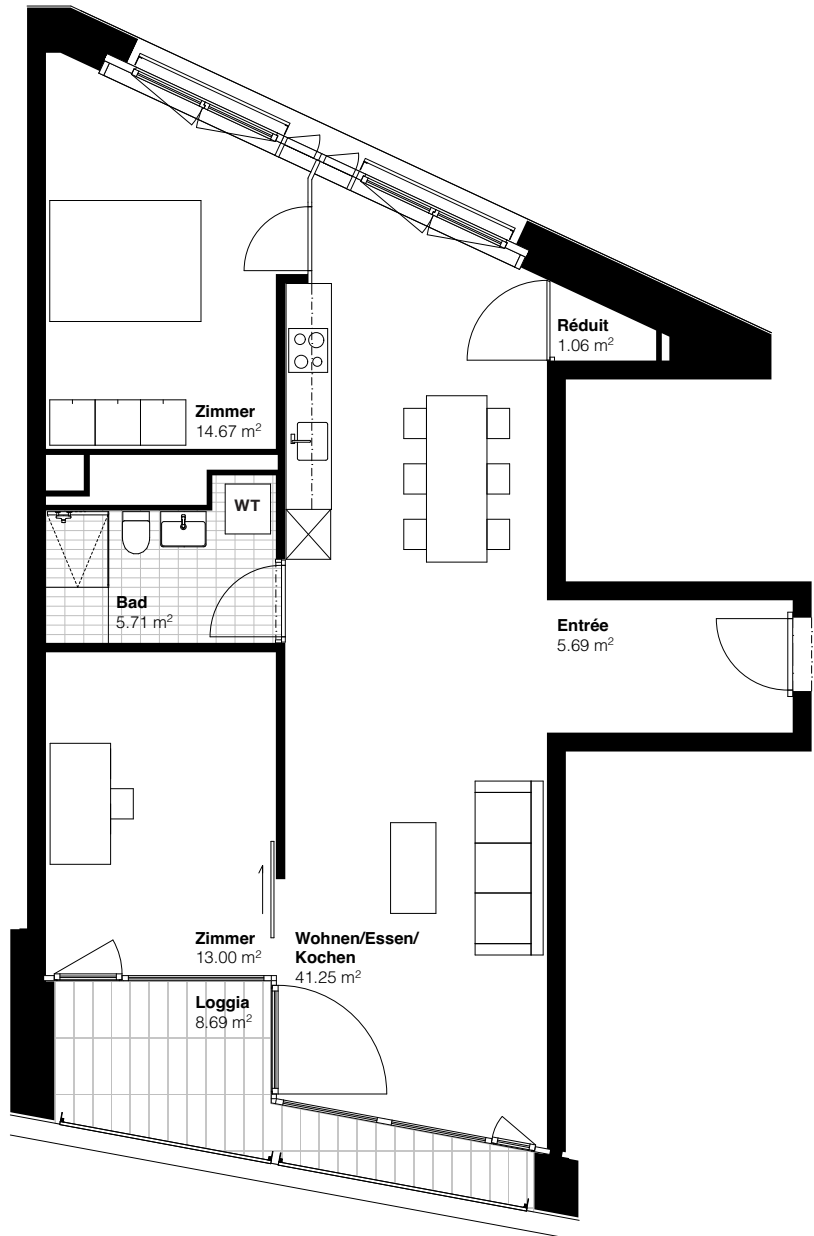
Eisenbahnweg 2b
4058 Basel

**3½-ZIMMER
2.-11. OBERGESCHOSS**

Wohnfläche 80.32 m²
Réduit 1.06 m²
Loggia 8.69 m²

**WOHNUNGSNUMMER/
BRUTTOMIETZINS (Inkl. NK)**

02.C.3	CHF	1'610.00
03.C.3	CHF	1650.00
04.C.3	CHF	1'690.00
05.C.3	CHF	1'780.00
06.C.3	CHF	1'820.00
07.C.3	CHF	1'910.00
08.C.3	CHF	1'980.00
09.C.3	CHF	2'050.00
10.C.3	CHF	2'140.00
11.C.3	CHF	2'290.00



Haus C

