

**TREPPENHAUS C
 WOHNUNGSTYP 22**

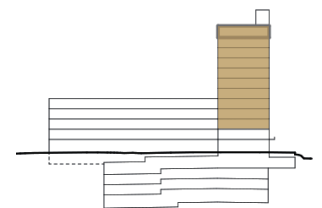
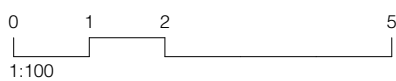
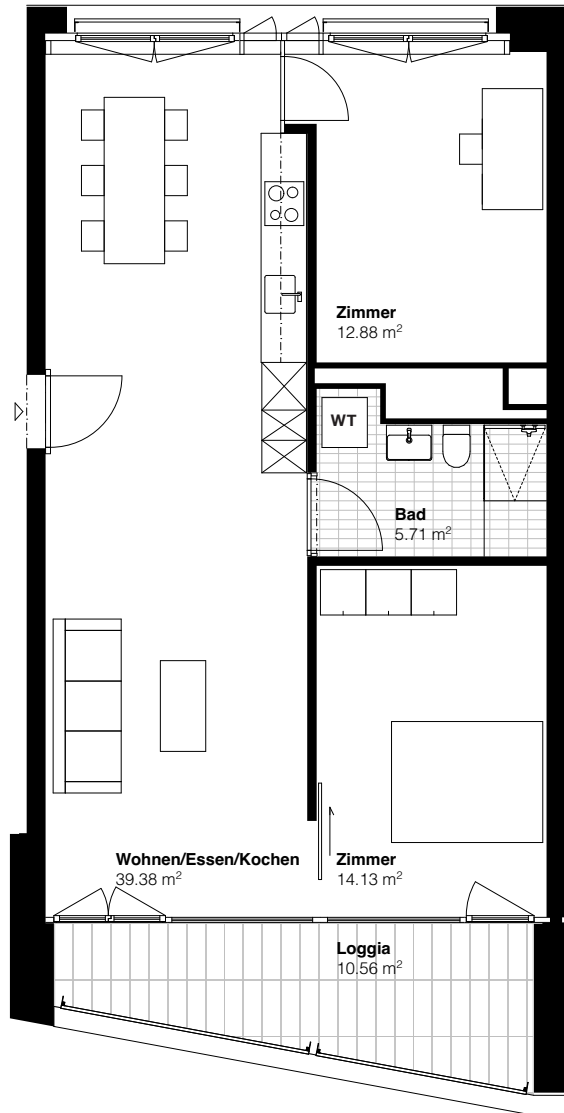
Eisenbahnweg 2b
 4058 Basel

**3½-ZIMMER
 2.-11. OBERGESCHOSS**

Wohnfläche 72.10 m²
 Loggia 10.56 m²

**WOHNUNGSNUMMER/
 BRUTTOMIETZINS (Inkl. NK)**

02.C.1	CHF	1'530.00
03.C.1	CHF	1'570.00
04.C.1	CHF	1'610.00
05.C.1	CHF	1'700.00
06.C.1	CHF	1'740.00
07.C.1	CHF	1'830.00
08.C.1	CHF	1'900.00
09.C.1	CHF	1'970.00
10.C.1	CHF	2'060.00
11.C.1	CHF	2'210.00



Haus C

