

**TREPPENHAUS B
WOHNUNGSTYP 21**

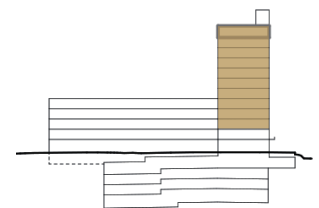
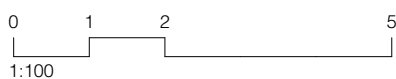
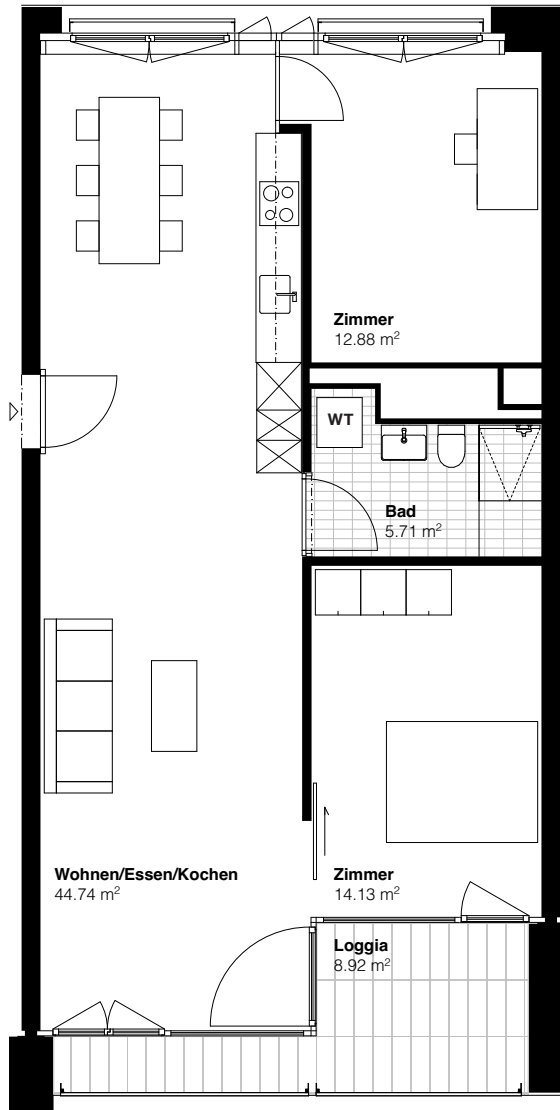
Eisenbahnweg 2a
4058 Basel

**3½-ZIMMER
2.-11. OBERGESCHOSS**

Wohnfläche 77.46 m²
Loggia 8.92 m²

**WOHNUNGSNUMMER/
BRUTTOMIETZINS (Inkl. NK)**

02.B.1	CHF	1'580.00
03.B.1	CHF	1'620.00
04.B.1	CHF	1'660.00
05.B.1	CHF	1'750.00
06.B.1	CHF	1'790.00
07.B.1	CHF	1'880.00
08.B.1	CHF	1'950.00
09.B.1	CHF	2'020.00
10.B.1	CHF	2'110.00
11.B.1	CHF	2'260.00



Haus B

