

**TREPPENHAUS B
 WOHNUNGSTYP 19**

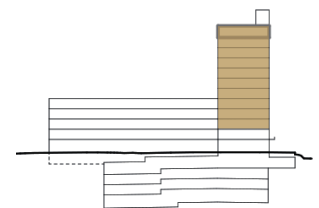
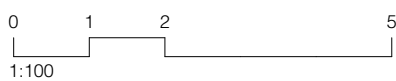
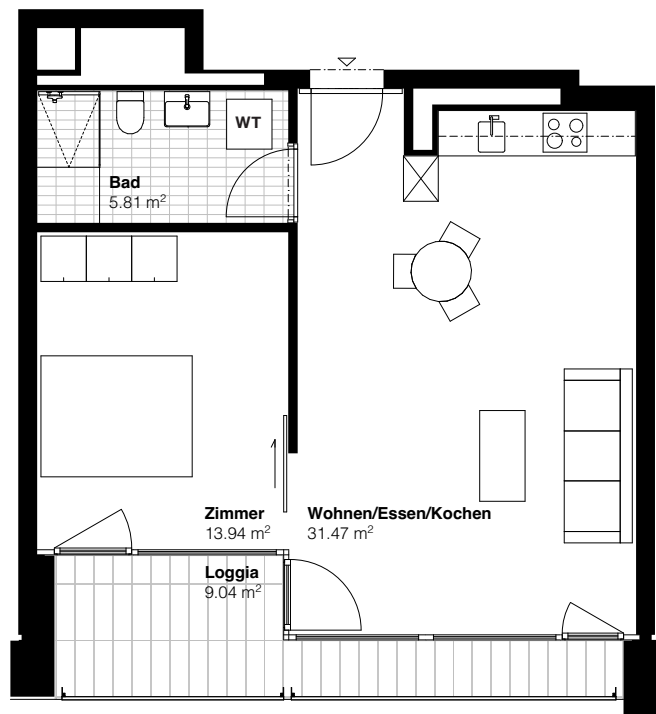
Eisenbahnweg 2a
 4058 Basel

**2½-ZIMMER
 2.-11. OBERGESCHOSS**

Wohnfläche 51.22 m²
 Loggia 9.04 m²

**WOHNUNGSNUMMER/
 BRUTTOMIETZINS (Inkl. NK)**

02.B.2	CHF	1'310.00
03.B.2	CHF	1'350.00
04.B.2	CHF	1'390.00
05.B.2	CHF	1'480.00
06.B.2	CHF	1'520.00
07.B.2	CHF	1'610.00
08.B.2	CHF	1'680.00
09.B.2	CHF	1'750.00
10.B.2	CHF	1'840.00
11.B.2	CHF	1'990.00



Haus B

